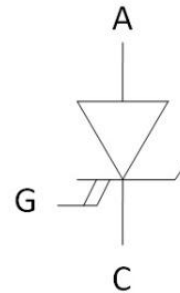
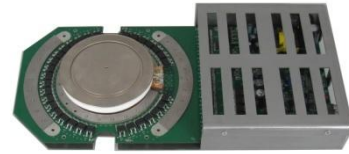




## Integrated Gate Turn-off (IGTO) Thyristor

### FEATURES

- High snubberless turn-off (4000A) capability
- Suitable for high frequency (>1kHz) operation
- Low gate drive power consumption
- Built-in over-current protection
- Optical trigger input and status feedback
- Suitable for series and parallel operation



Product Summary	
$V_{DRM}$	4500V
$I_{TGQM}$	4000A
$I_{TSM}$	25kA
$V_{TO}$	1.2V
$V_{Dclink}$	2800V

Absolute Maximum Ratings $T_C = 25^\circ\text{C}$ , unless otherwise noted				
Parameter	Symbol	Test Conditions	Value	Unit
Rep. Peak Off-state Voltage	$V_{DRM}$	Gate Unit Energized	4500	V
Long Term DC Voltage	$V_{Dclink}$	Ambient Cosmic Radiation at Sea Level in Open Air. Gate Unit Energized	2800	V
Rep. Peak Off-state Current	$I_{DRM}$	$V_D = V_{DRM}$ , Gate Unit Energized	50	mA

Thermal Resistance					
Parameter	Symbol	Value			Unit
		Min.	Typ.	Max.	
Junction Operating Temperature	$T_{VJ}$	-25	--	125	$^\circ\text{C}$
Storage Temperature Range	$T_{stg}$	-25	--	60	$^\circ\text{C}$
Ambient Temperature	$T_A$	-25	--	50	$^\circ\text{C}$
Thermal Resistance Junction to Case (Double side cooling)	$R_{th(J-C)}$	--	--	12.7	K/kW
Thermal Resistance Case to Heatsink (Double side cooling)	$R_{th(C-H)}$	--	--	3	K/kW



Specifications $T_A = 25^\circ\text{C}$ , unless otherwise noted							
Parameter	Symbol	Test Conditions	Value			Unit	
			Min.	Typ.	Max.		
<b>Static</b>							
Max. Peak Non-repetitive Surge Current	$I_{TSM}$	$T_J = 125^\circ\text{C}$	$T_P = 10\text{ms}$	--	--	25	KA
			$T_P = 1\text{ms}$	--	--	40	
On-state Voltage	$V_T$	$T_J = 125^\circ\text{C}, I_{T_{GQ}} = 2000\text{A}$	--	2.7	2.9	V	
Max. Average On-state Current	$I_{T(AV)M}$	Half Sine Wave, $T_C = 85^\circ\text{C}$ , Double Side Cooling	--	--	1700	A	
Threshold Voltage	$V_{T0}$	$T_J = 125^\circ\text{C}, I_T = 1000\text{...}4000\text{A}$	--	--	1.2	V	
<b>Turn-on Process</b>							
Max. Rate of Rise of On-state Current	$di/dt$	$V_{DM} < V_{DRM}, T_J = 125^\circ\text{C}$ $V_D = 2250\text{V}$	--	1000	--	A/ $\mu\text{s}$	
Turn-on Delay Time	$T_{don}$	$V_{DM} < V_{DRM}, T_J = 125^\circ\text{C}$ $V_D = 2250\text{V}, I_{T_{GQ}} = 4000\text{A}$	--	--	4	$\mu\text{s}$	
Rise Time	$T_r$		--	--	1	$\mu\text{s}$	
Min. On-time	$T_{on(min.)}$		40	--	--	$\mu\text{s}$	
<b>Turn-off Process</b>							
Max. Controllable Turn-off Current	$I_{TGQM}$	$V_{DM} < V_{DRM}, T_J = 125^\circ\text{C}$ $V_D = 2250\text{V}$	--	--	4000	A	
Turn-off Delay Time	$T_{doff}$	$V_{DM} < V_{DRM}, T_J = 125^\circ\text{C}$ $V_D = 2250\text{V}, I_{T_{GQ}} = 4000\text{A}$	--	--	4	$\mu\text{s}$	
Fall Time	$T_f$		--	--	0.8	$\mu\text{s}$	
Min. Off-time	$T_{off(min.)}$		40	--	--	$\mu\text{s}$	

Power Supply of Gate Unit							
Parameter	Symbol	Test Conditions	Value			Unit	
			Min.	Typ.	Max.		
Power Supply Voltage	$V_G$	AC Square Wave Amplitude (15kHz-100kHz) or DC Voltage. NO Galvanic Isolation to Power Circuit	28	35	40	V	
Gate Unit Power Consumption	$P_G$	$f = 1\text{kHz}, \delta = 0.5$	--	--	30	W	



Power Supply of Gate Unit			
Parameter	Symbol	Test Conditions	Connector Description
Receiver for Command Signal	CS	Light Trigger On	HFBR-2521
Transmitter for Status Feedback	SF	Light Output During On-state	HFBR-1521
Transmitter for Current Sensor Output	IS	PWM Light During On-state for Current Through	HFBR-1521
Transmitter for Temperature Sensors Output	TP	PWM Light for Temperature of ETO Cathode	HFBR-1521
Fault Feedback		NO	

Sensor Characteristics	
Symbol	Typical Formula
Duty_I	$Duty\_I = 0.000107 \times I_T + 0.5$
Duty_T	$Duty\_T = 0.0033 \times T + 0.5$

Protection Characteristics				
Parameter	Symbol	Test Conditions	Default Setting	Unit
Over-current Protection	Foc	Anode Current Exceeds Max Setting Value, Set by (1-4KA Adjustable)	3000	A

Protection Characteristics			
Parameter	Symbol	Description	Color
Power Supply Voltage OK	LED1	"light" When Power Supply is OK.	Green
Over-current Protection	LED2	"light" When ETO is Protected.	Red

Power supply of gate unit						
Parameter	Symbol	Test Conditions	Value			Unit
			Min.	Typ.	Max.	
Mounting Force	Fm	--	36	40	44	KN
Weight	M	--	--	3	--	Kg



Figure 1. Duty\_I vs. Current

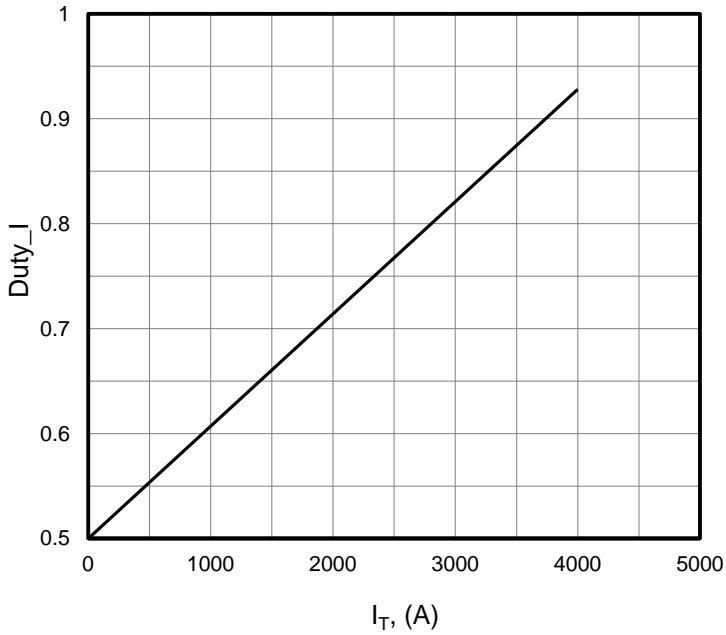


Figure 2. Duty\_T vs. Temperature

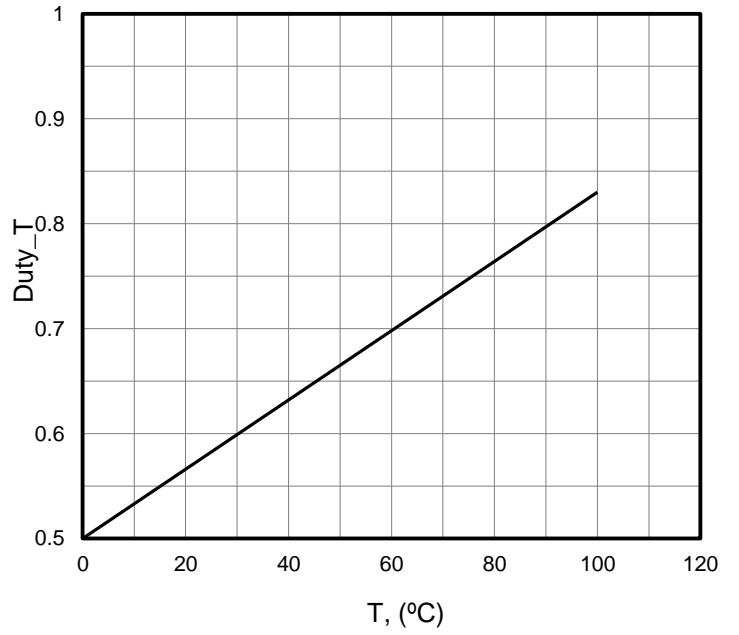


Figure 3. On-state characteristics

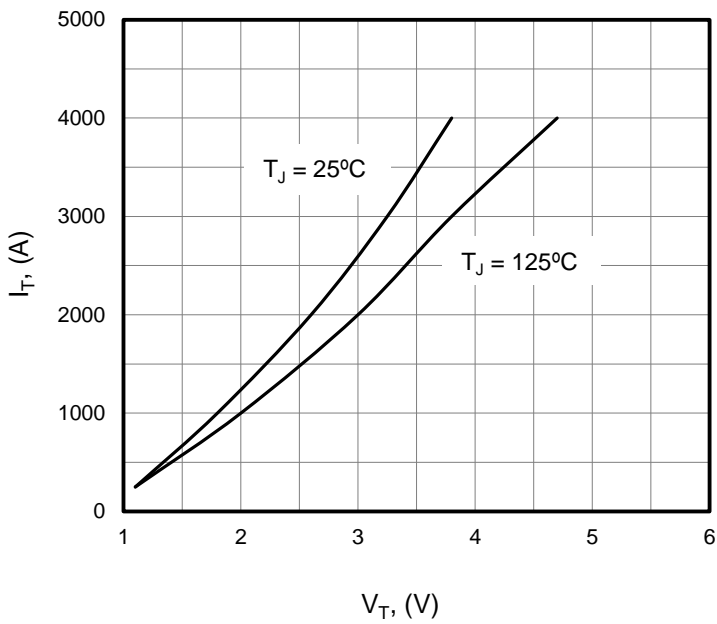


Figure 4. Turn-off loss

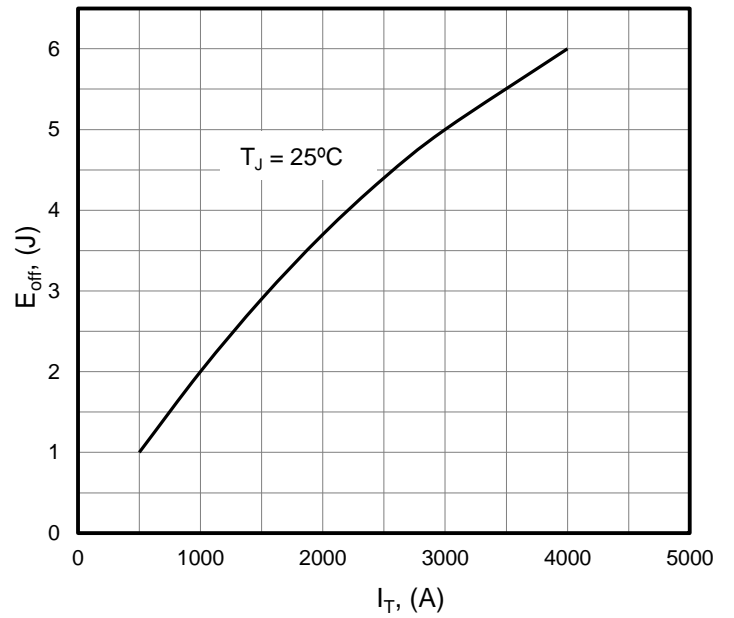




Figure 5. Gate Unit input power

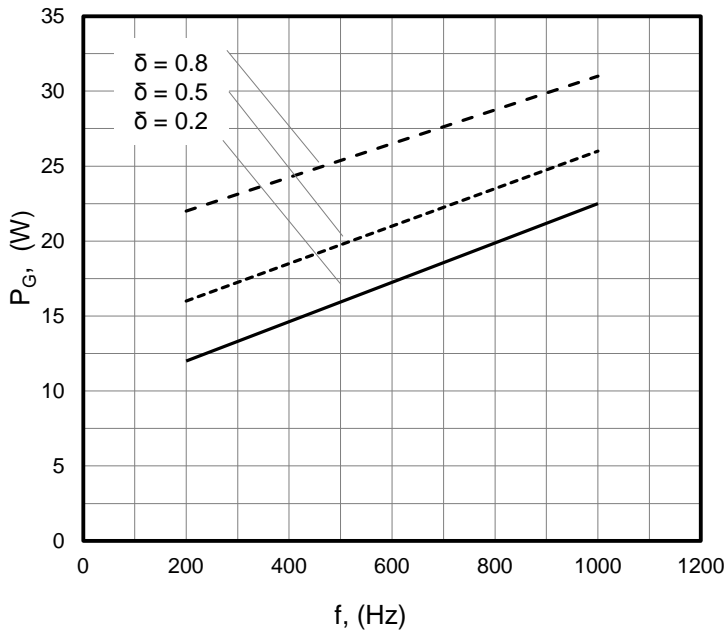




Figure 6. Outline Drawing (all dimensions are in MM)

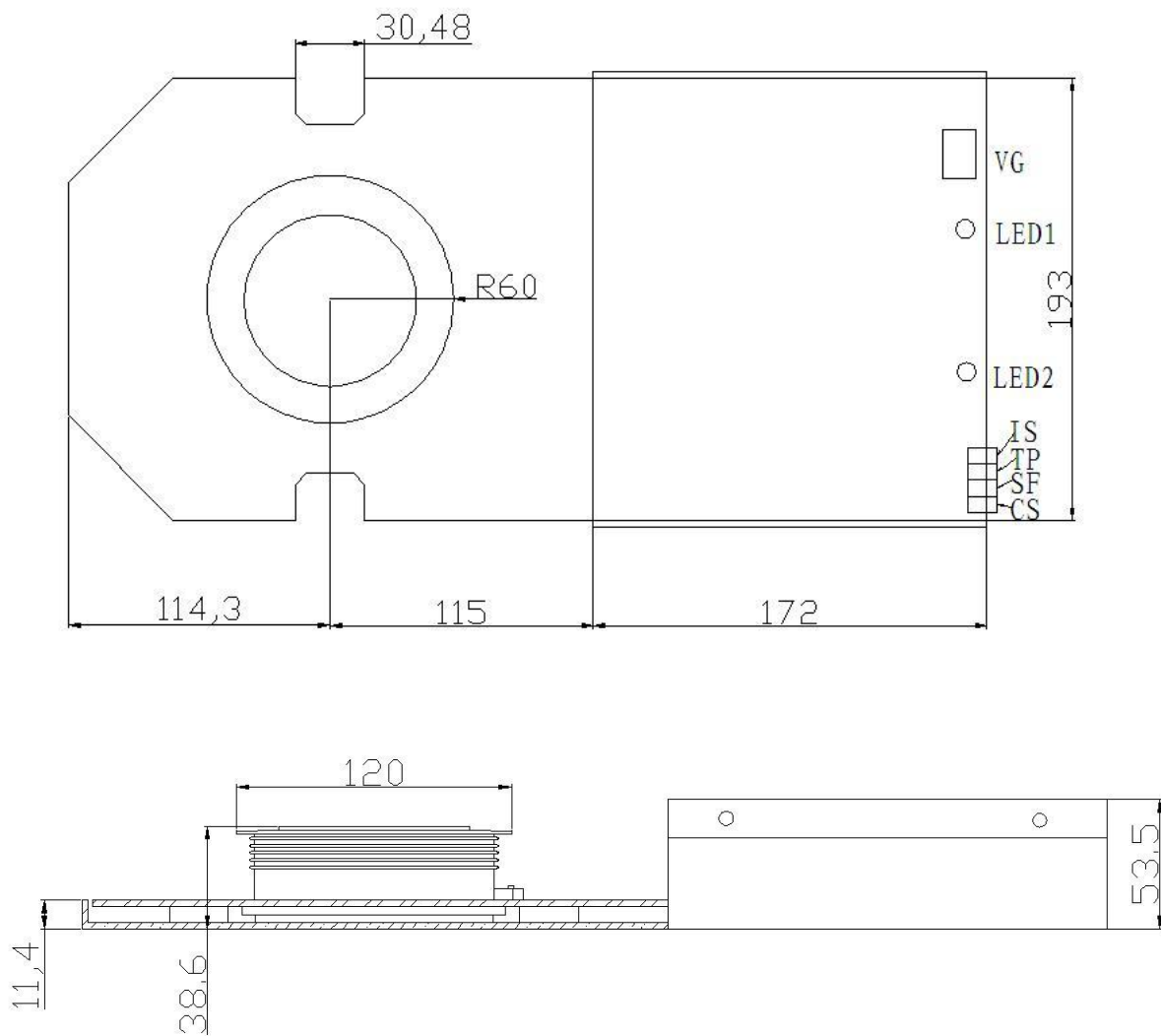
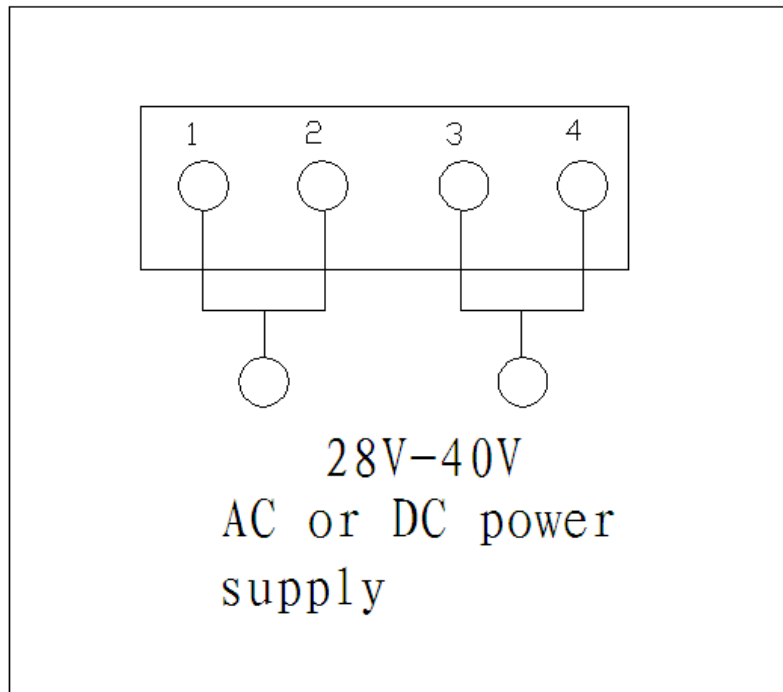




Figure 7. Explanation of power supply terminal





## Disclaimer

All product specifications and data are subject to change without notice.

For documents and material available from this datasheet, Wuxi Unigroup does not warrant or assume any legal liability or responsibility for the accuracy, completeness of any product or technology disclosed hereunder.

No license, express or implied, by estoppels or otherwise, to any intellectual property rights is granted by this document or by any conduct of Wuxi Unigroup.

The products shown herein are not designed for use in medical, life-saving, or life-sustaining applications. Customers using or selling Wuxi Unigroup products not expressly indicated for use in such applications do so entirely at their own risk and agree to fully indemnify Wuxi Unigroup for any damages arising or resulting from such use or sale.

Wuxi Unigroup disclaims any and all liability arising out of the use or application of any product described herein or of any information provided herein to the maximum extent permitted by law. The product specifications do not expand or otherwise modify Wuxi Unigroup's terms and conditions of purchase, including but not limited to the warranty expressed therein, which apply to these products.

Wuxi Unigroup Microelectronics CO., LTD. strives to supply high-quality high-reliability products. However, any and all semiconductor products fail with some probability. It is possible that these probabilistic failures could give rise to accidents or events that could endanger human lives that could give rise to smoke or fire, or that could cause damage to other property. When designing equipment, adopt safety measures so that these kinds of accidents or events cannot occur. Such measures include but are not limited to protective circuits and error prevention circuits for safe design, redundant design, and structural design.

In the event that any or all Wuxi Unigroup products (including technical data, services) described or contained herein are controlled under any of applicable local export control laws and regulations, such products must not be exported without obtaining the export license from the authorities concerned in accordance with the above law.

Information (including circuit diagrams and circuit parameters) herein is for example only. It is not guaranteed for volume production. Wuxi Unigroup believes information herein is accurate and reliable, but no guarantees are made or implied regarding its use or any infringements of intellectual property rights or other rights of third parties.